



MINISTÉRIO DA
CIÊNCIA, TECNOLOGIA
E INOVAÇÕES

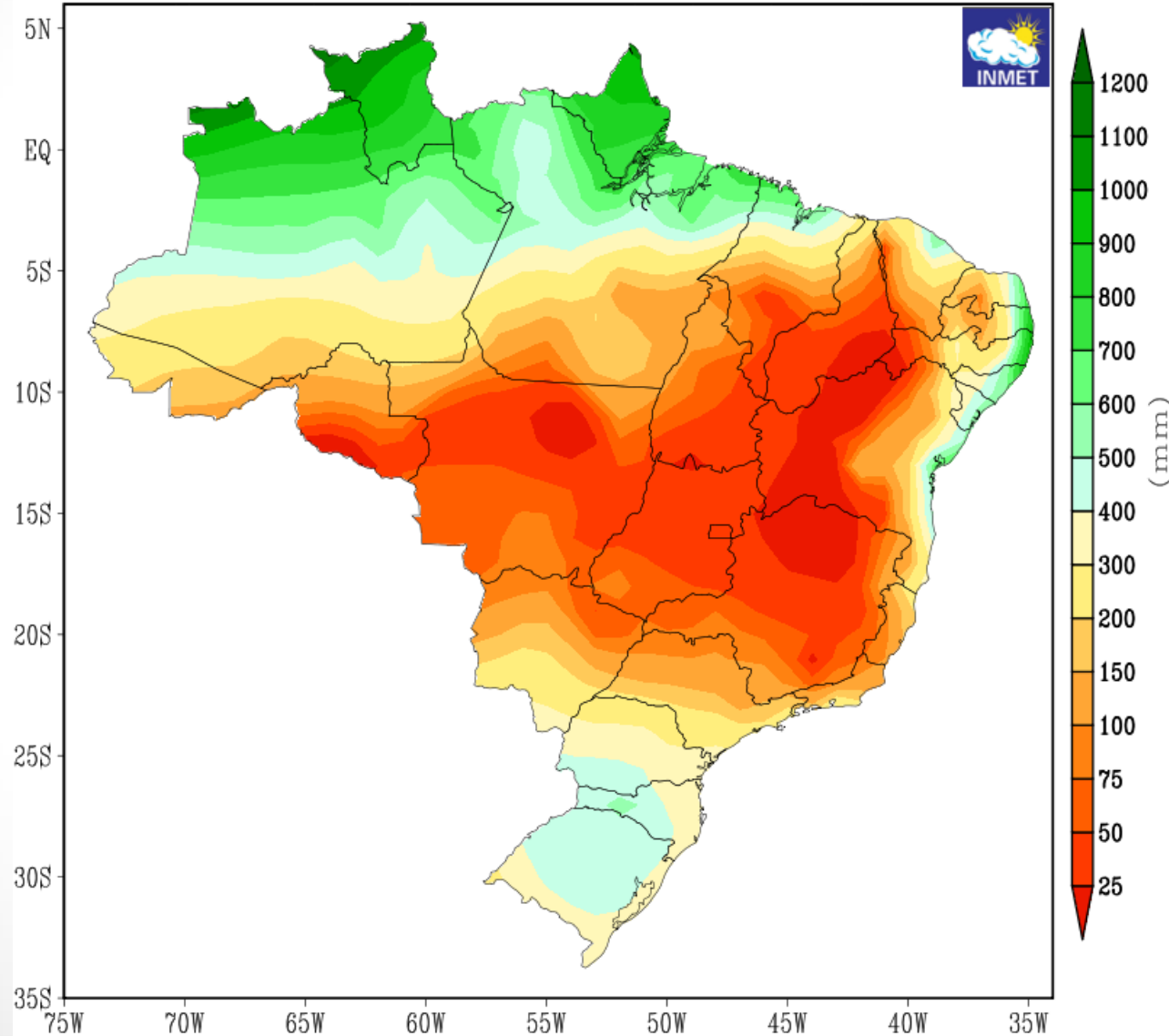


Webinar Segurança Hídrica na Bacia do Alto Tietê

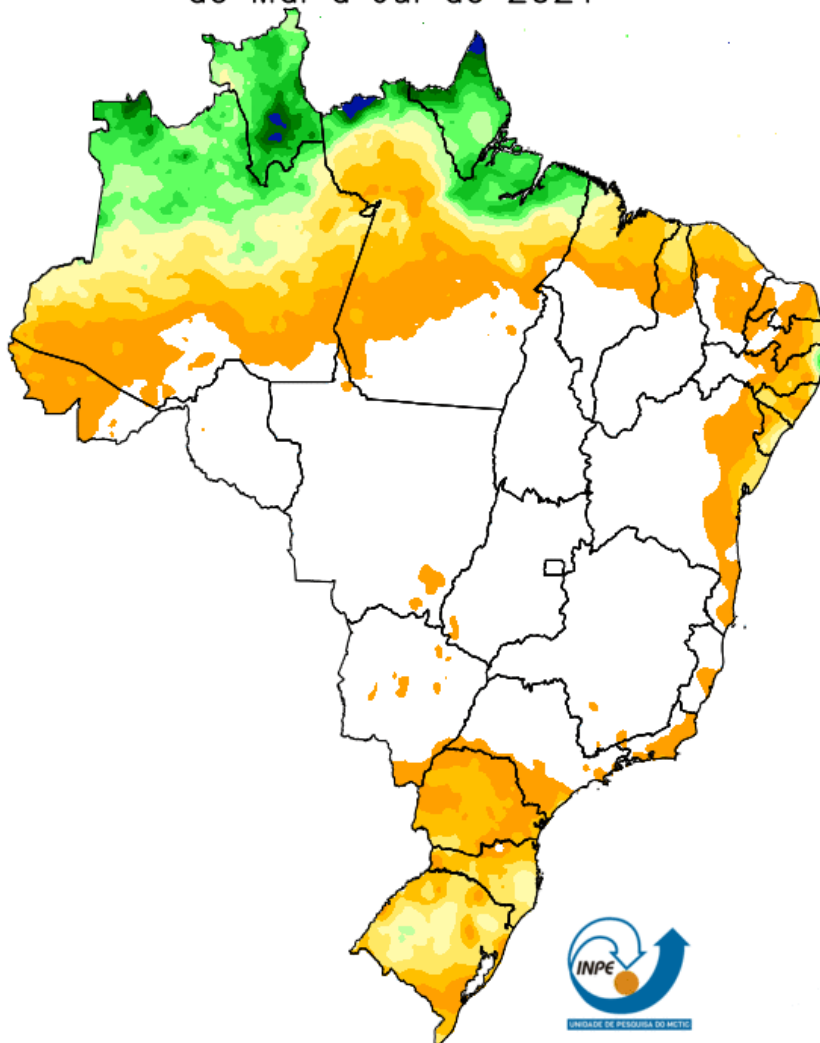
Cachoeira Paulista, 17 de agosto de 2021

Síntese MJJ

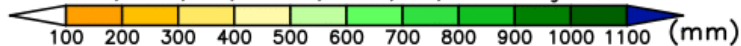
NORMAL CLIMATOLÓGICA DA PRECIPITAÇÃO TRIMESTRE MAIO-JUNHO-JULHO PERÍODO DE REFERÊNCIA : 1981-2010



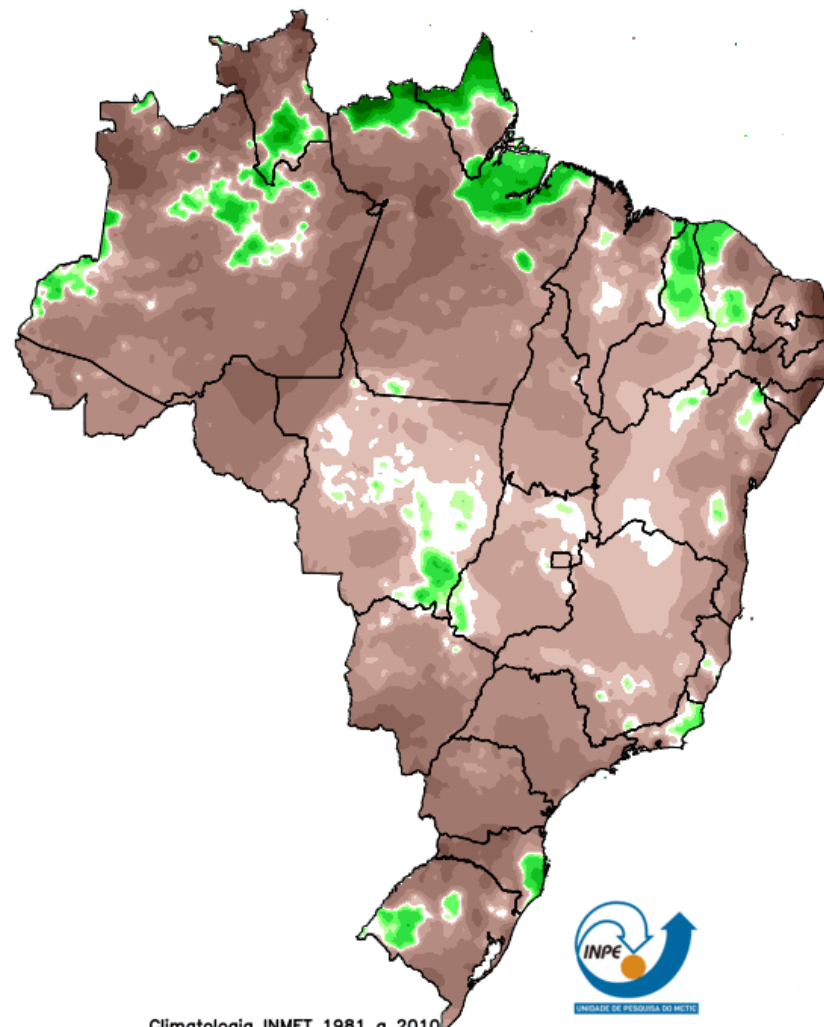
Precipitação observada (Merge) de Mai a Jul de 2021



Fonte de dados: IAC, CEMIG, EMA, SIMEPAR, SYNOP, ANA, Centros Regionais + Satélite NASA

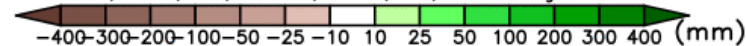


Anomalia de Precipitação observada (Merge) de Mai a Jul de 2021

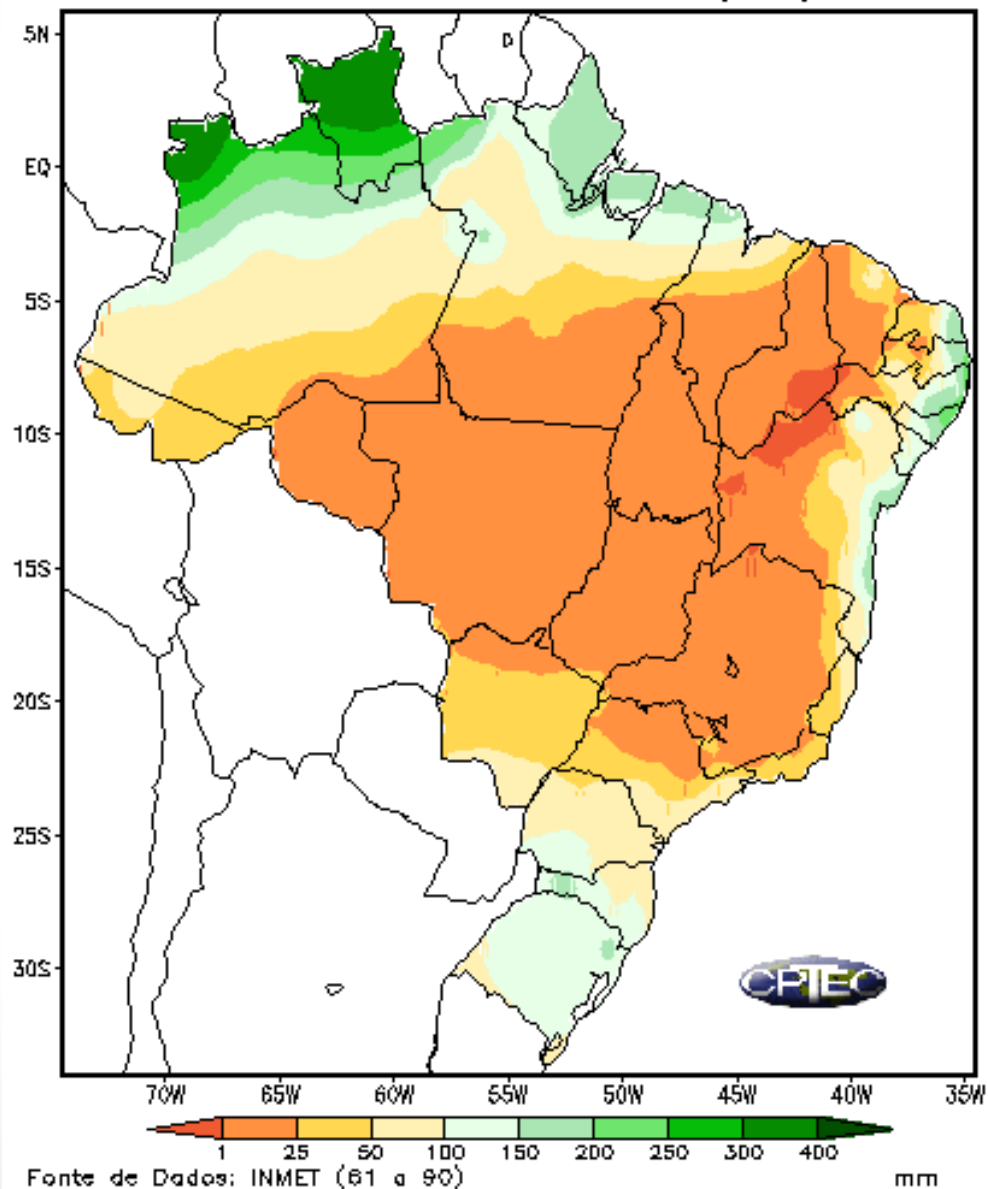


Climatologia INMET 1981 a 2010

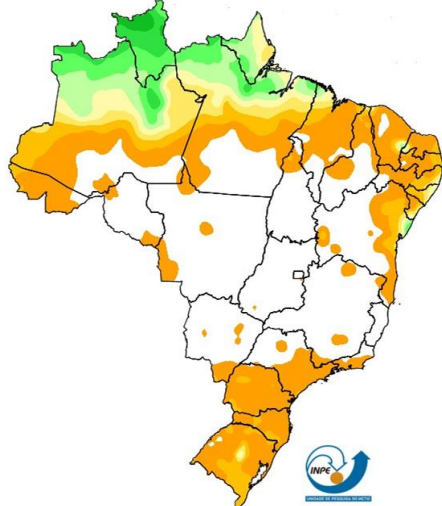
Fonte de dados: IAC, CEMIG, EMA, SIMEPAR, SYNOP, ANA, Centros Regionais + Satélite NASA



CLIMATOLOGIA DE PRECIPITAÇÃO (mm) – JUL

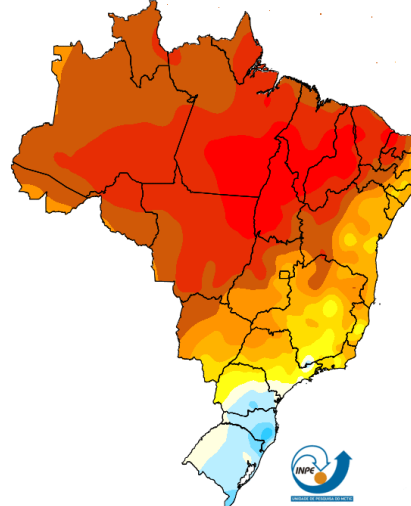


Precipitação observada
Jul de 2021



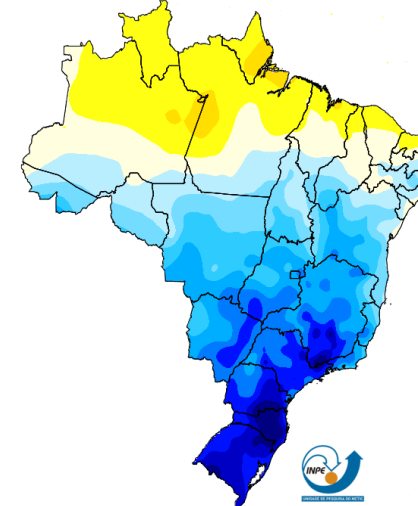
Fonte de dados: SYNOP, PCD, EMA-INMET, IAC e centros regionais
10 50 100 150 200 250 300 350 400 450 500 (mm)

Temperatura Máxima observada
Jul de 2021



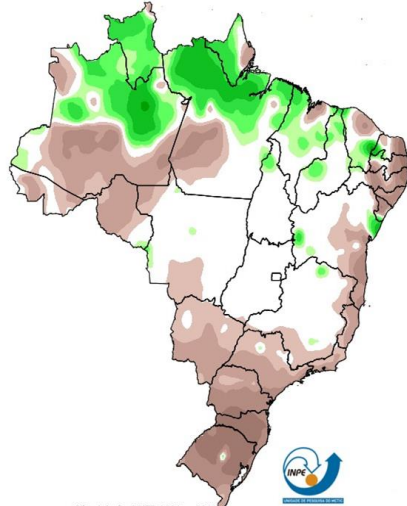
Fonte de dados: SYNOP, PCD, EMA, IAC, DECEA e centros regionais
6 8 10 12 14 16 18 20 22 24 26 28 30 32 34 36 (Celsius)

Temperatura Mínima observada
Jul de 2021



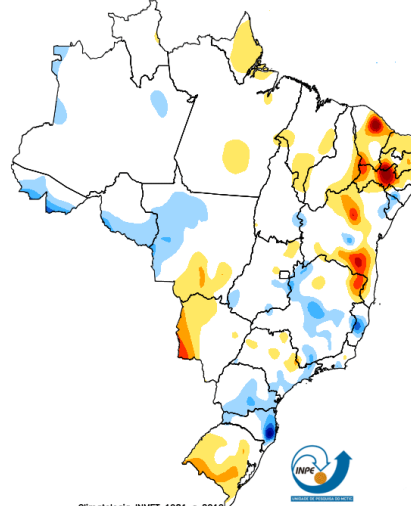
Fonte de dados: SYNOP, PCD, EMA, IAC, DECEA e centros regionais
6 8 10 12 14 16 18 20 22 24 26 28 30 32 34 36 (Celsius)

Anomalia de Precipitação observada
Jul de 2021



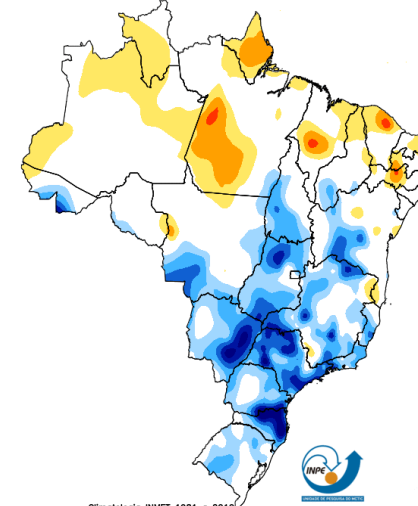
Climatologia INMET 1981 e 2010
Fonte de dados: SYNOP, PCD, EMA-INMET, IAC e centros regionais
-400 -300 -200 -100 -50 -25 -10 10 25 50 100 200 300 400 (mm)

Anomalia de Temperatura Máxima observada
Jul de 2021



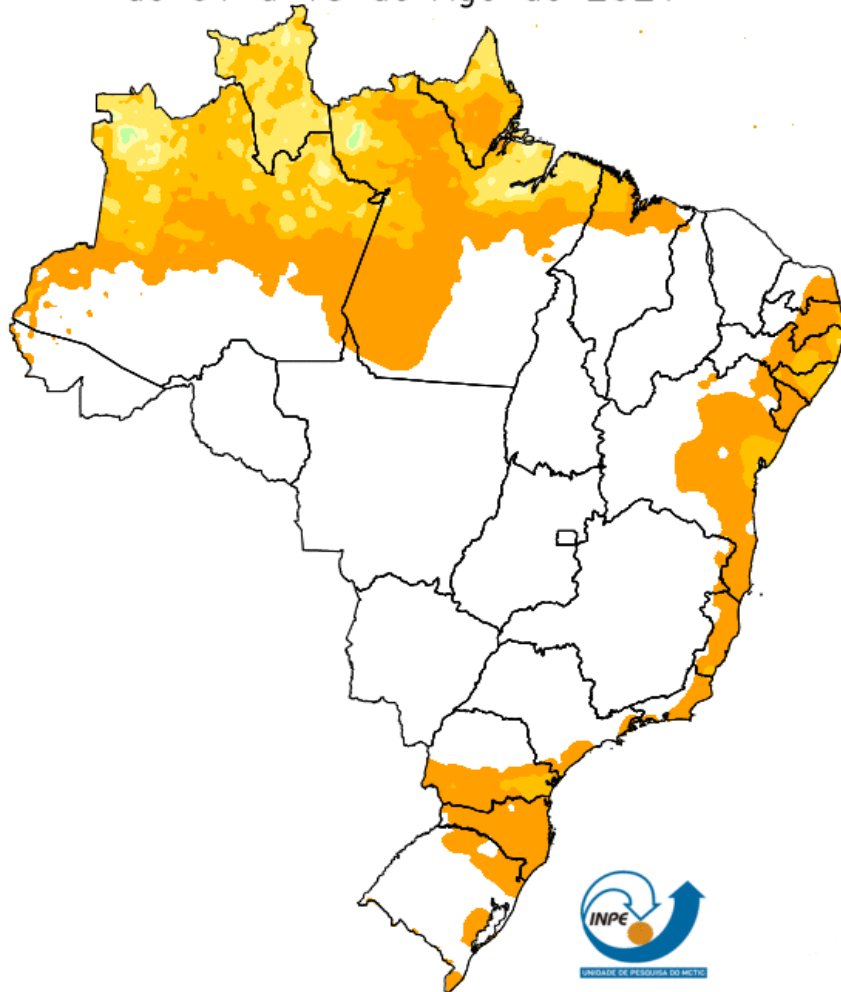
Climatologia INMET 1981 e 2010
Fonte de dados: SYNOP, PCD, EMA, IAC e centros regionais
-5 -4 -3 -2 -1 1 2 3 4 5 (Celsius)

Anomalia de Temperatura Mínima observada
Jul de 2021

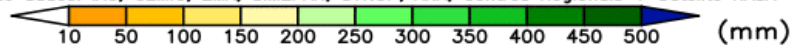


Climatologia INMET 1981 e 2010
Fonte de dados: SYNOP, PCD, EMA, IAC e centros regionais
-5 -4 -3 -2 -1 1 2 3 4 5 (Celsius)

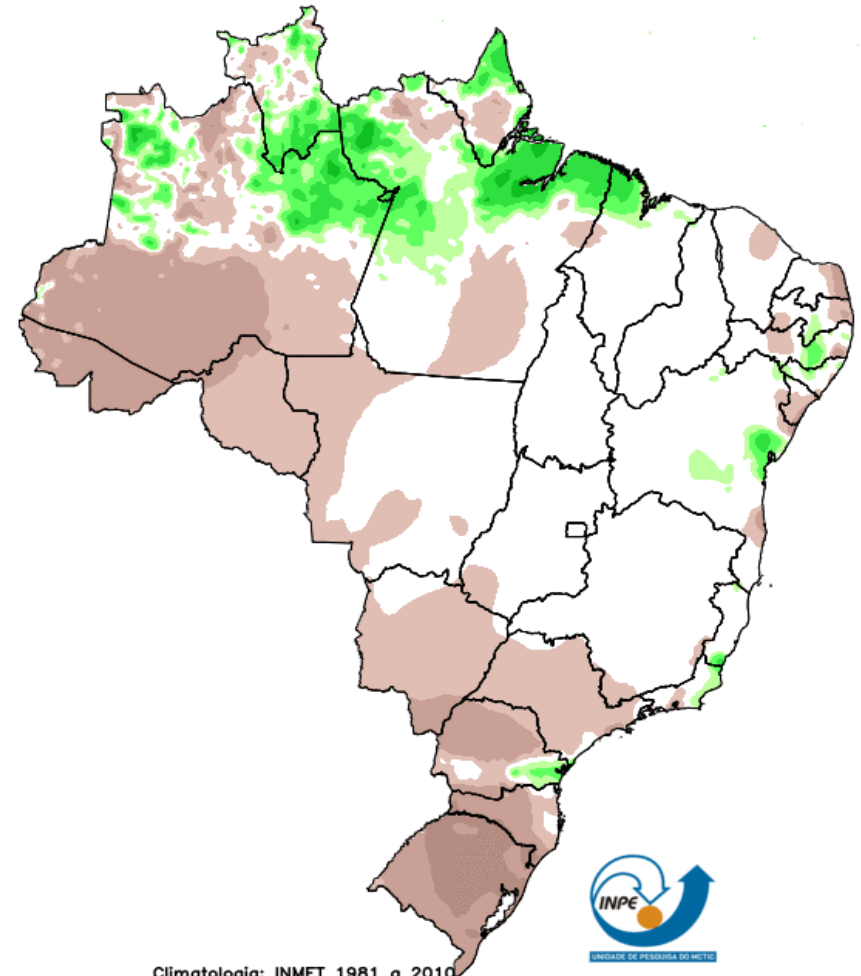
Precipitação observada (Merge)
de 01 a 15 de Ago de 2021



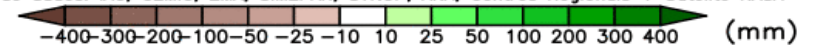
Fonte de dados: IAC, CEMIG, EMA, SIMEPAR, SYNOP, ANA, Centros Regionais + Satélite NASA



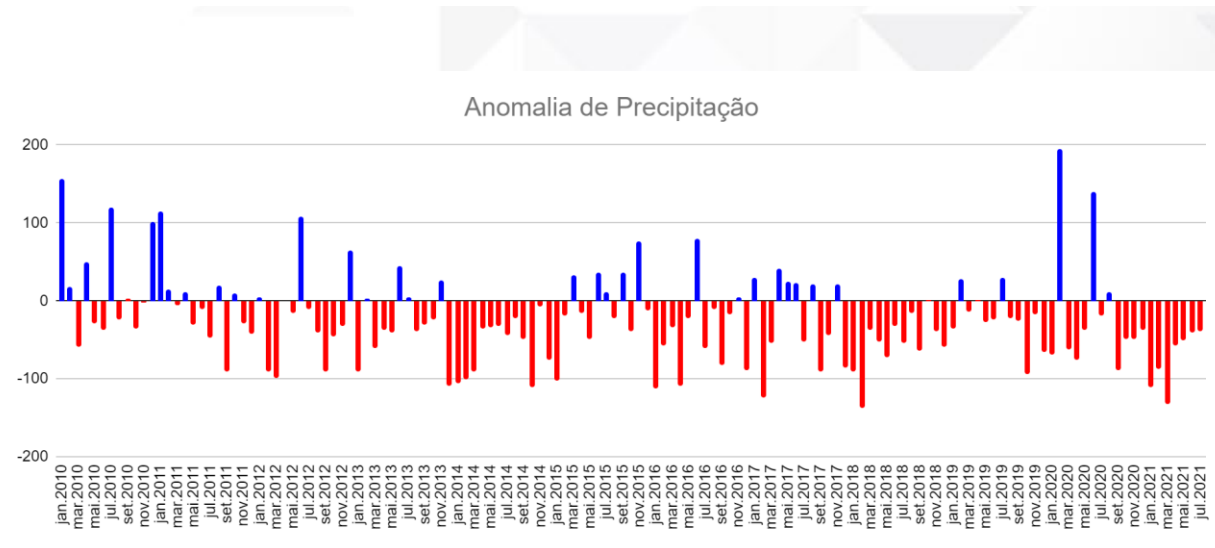
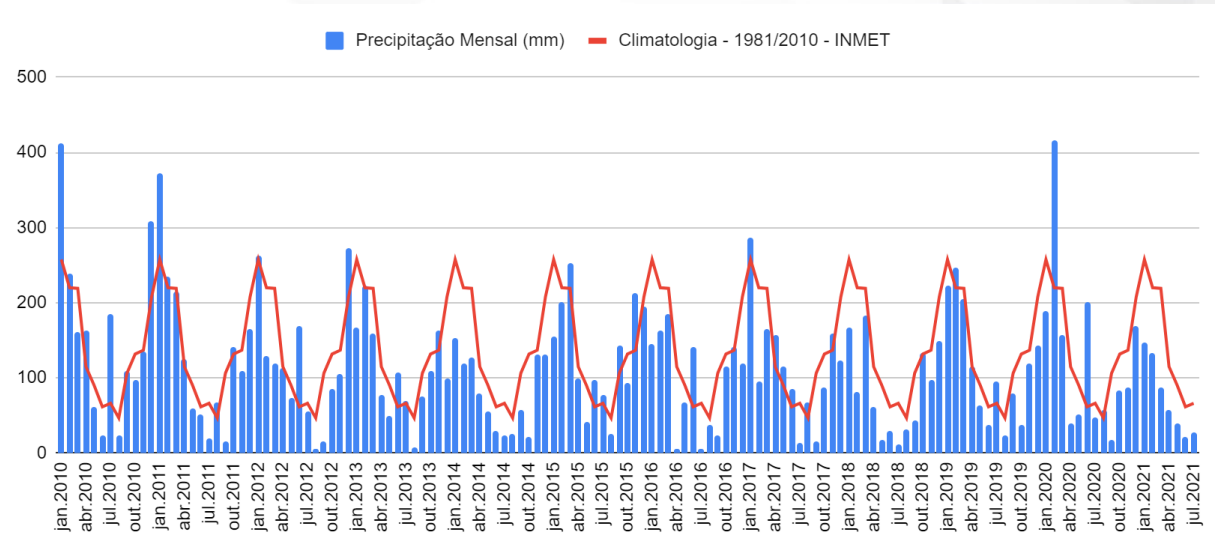
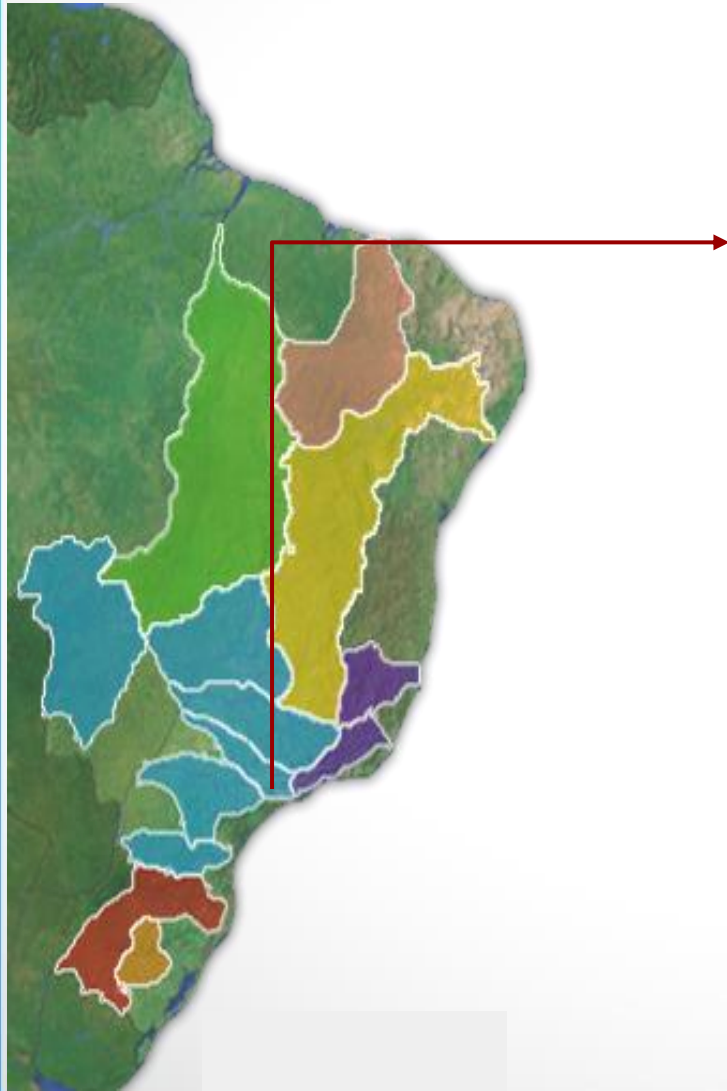
Anomalia de Precipitação observada (Merge)
01 a 15 de Ago de 2021



Climatologia: INMET 1981 a 2010
Fonte de dados: IAC, CEMIG, EMA, SIMEPAR, SYNOP, ANA, Centros Regionais + Satélite NASA

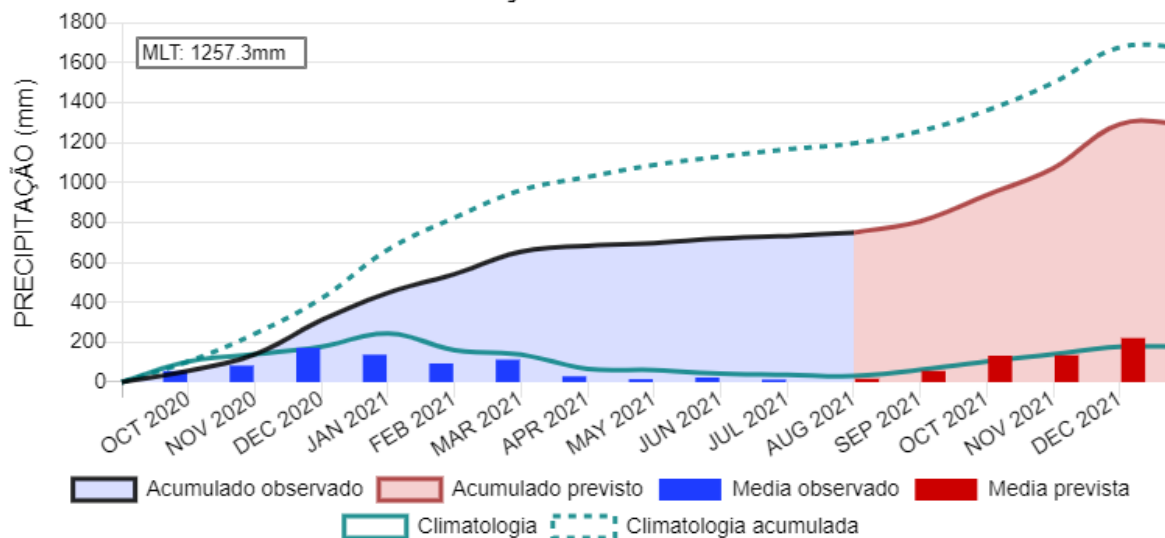


Precipitação mensal na Bacia do Alto Tietê

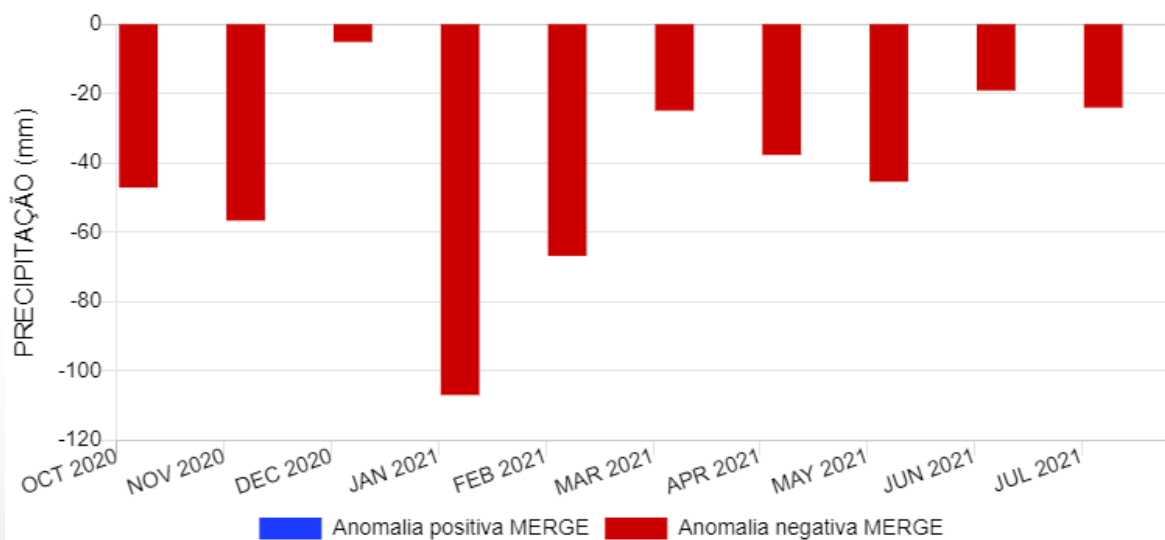


Precipitação mensal na Bacia do Tietê

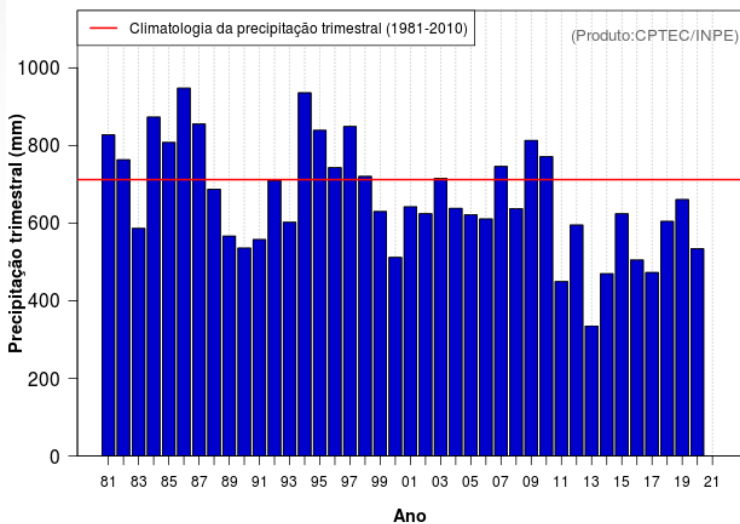
Evolução da chuva - Tietê



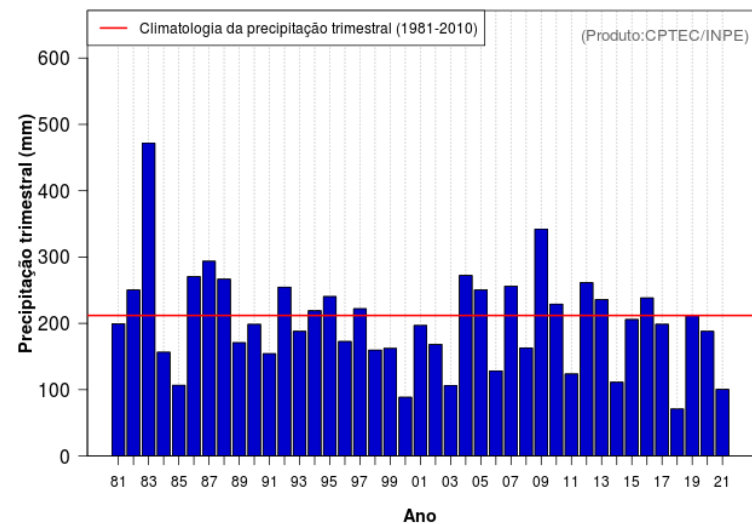
Anomalia da chuva - Tietê



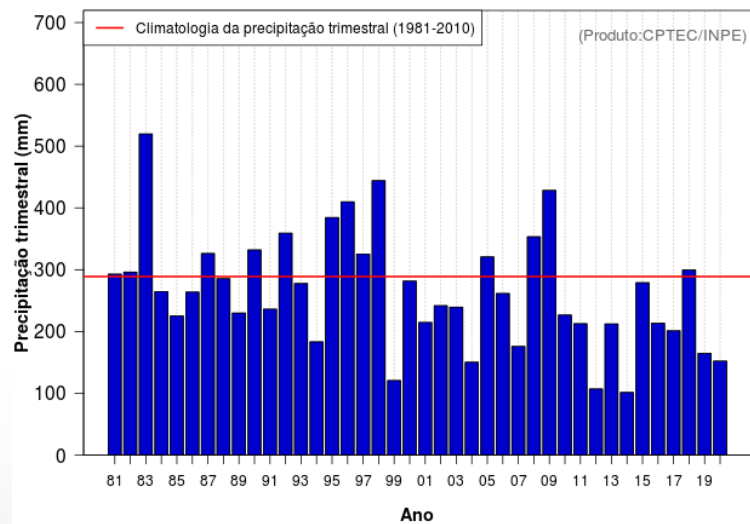
Precipitação Acumulada Trimestral (DJF): Região 114

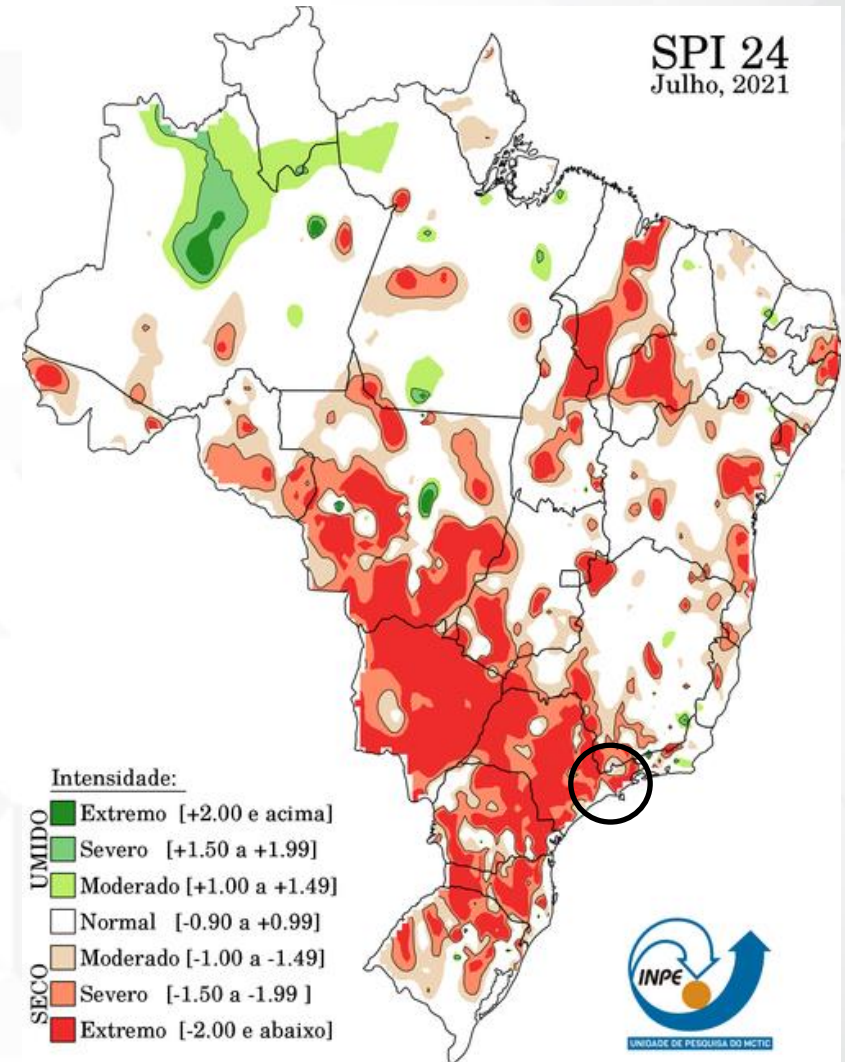
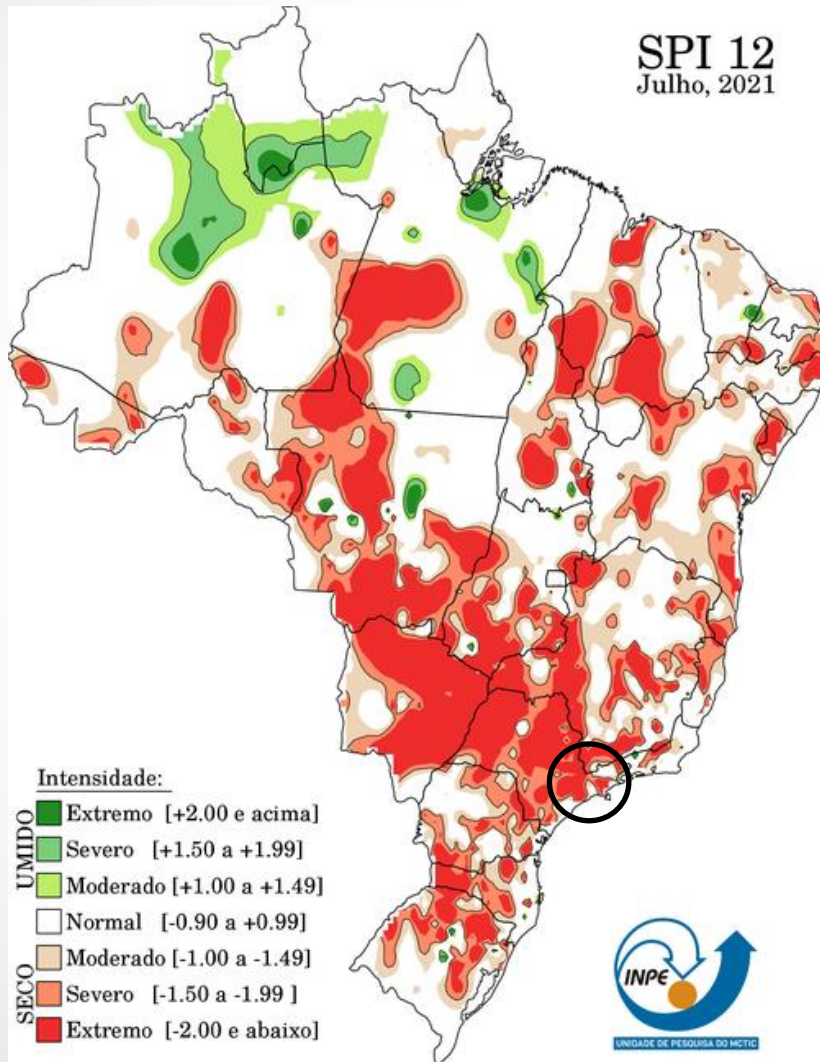


Precipitação Acumulada Trimestral (MJJ): Região 114



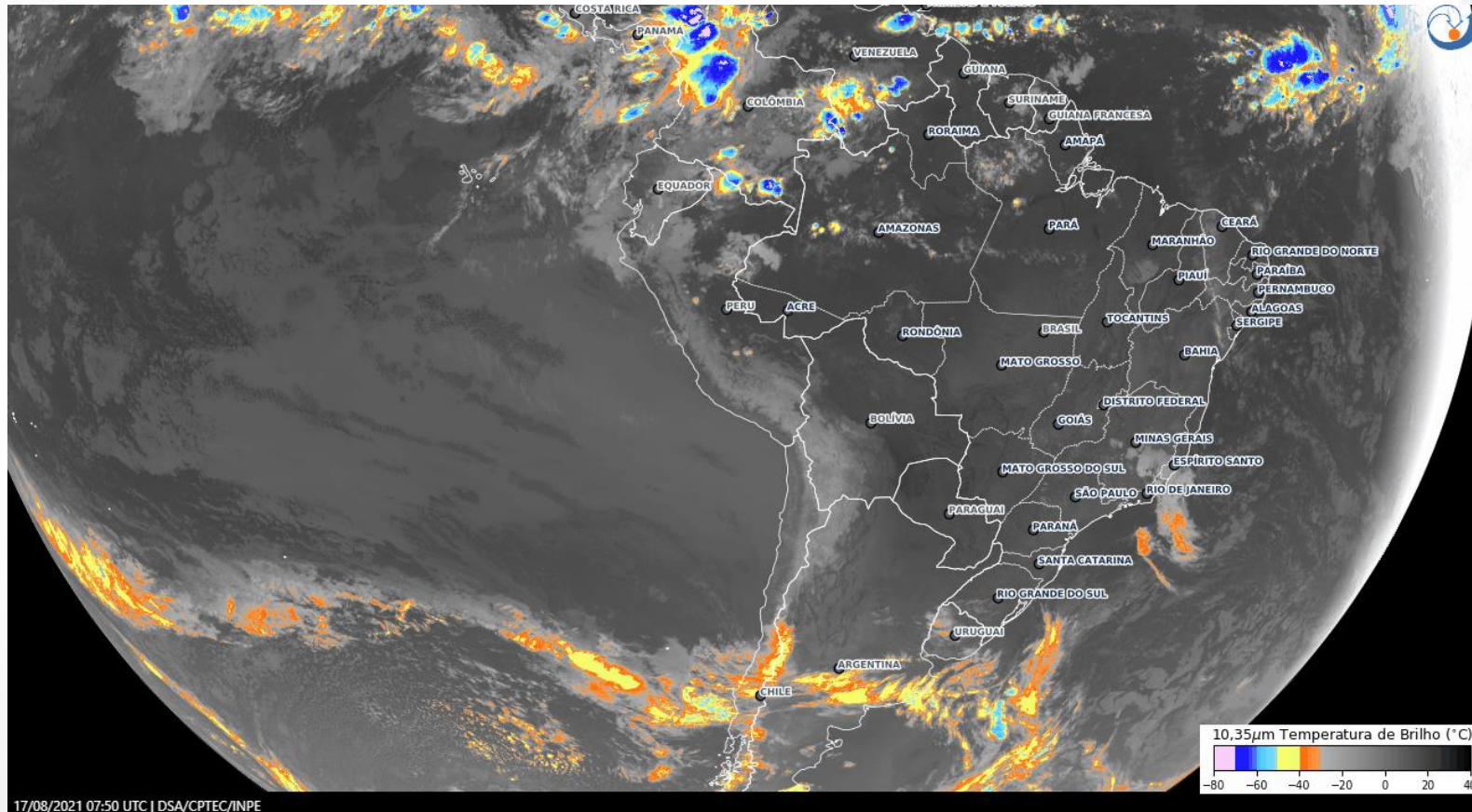
Precipitação Acumulada Trimestral (ASO): Região 114





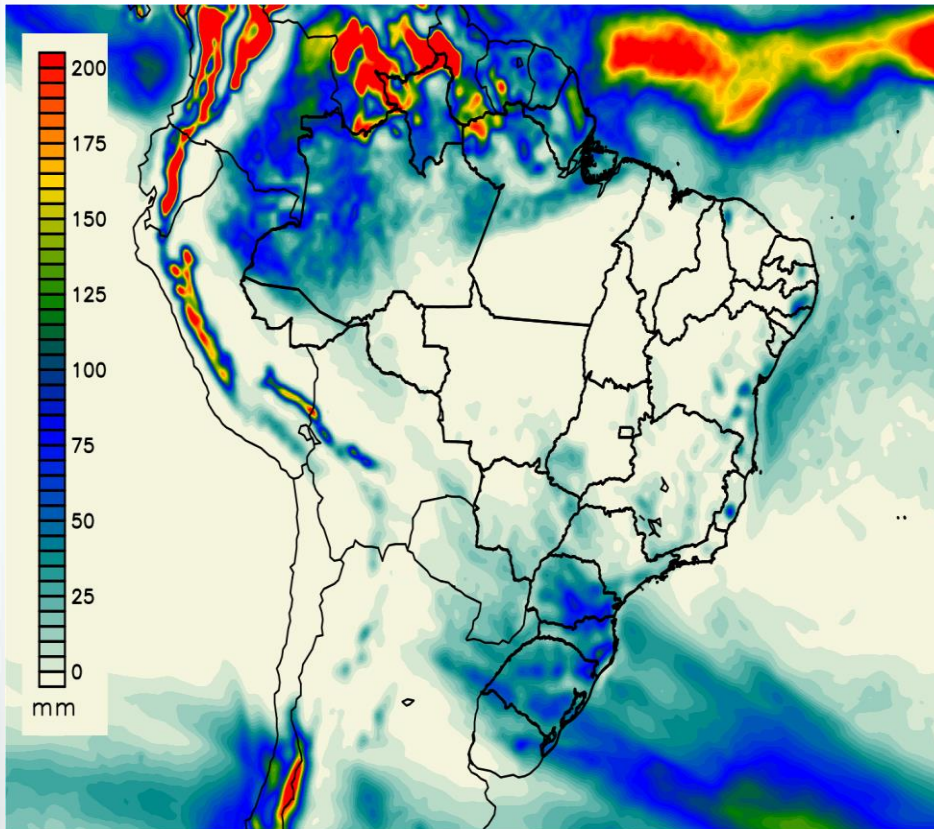
Previsão de Tempo

Animação do satélite GOES 16 - 17/08/2021 - 07:50 a 10:50 UTC

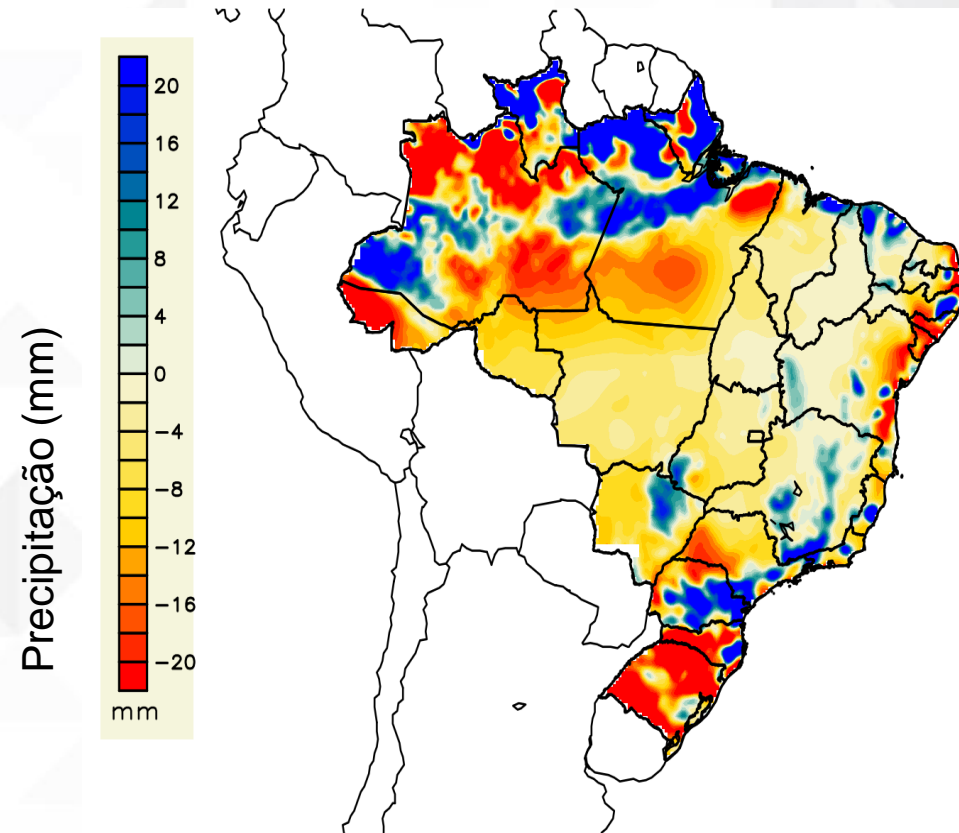


Previsão de Tempo

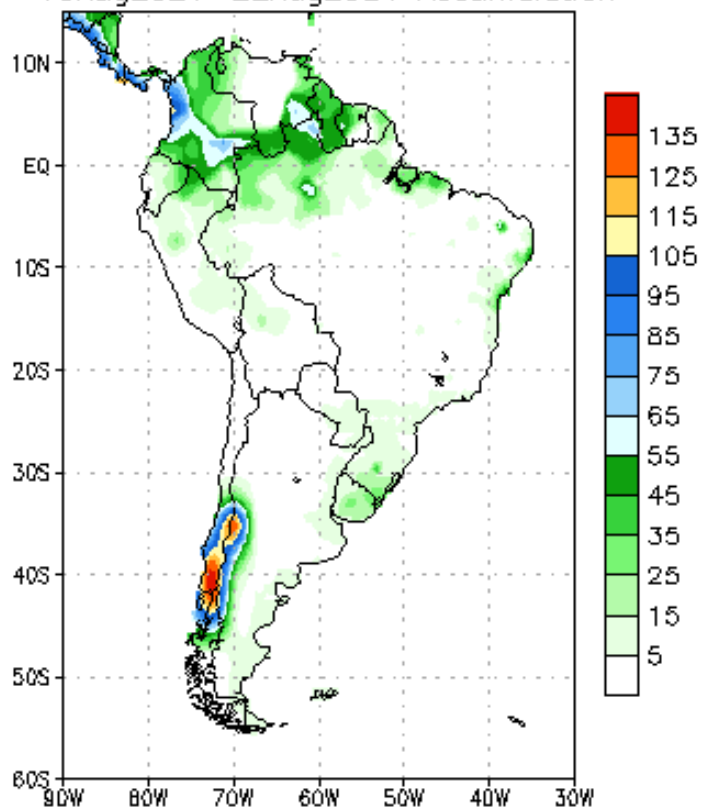
Precipitação Acumulada - 10 dias
17/08 - 26/08/2021
BAM 20 Km - CPTEC



Anomalia de Precipitação - 10 dias
17/08 - 26/08/2021
BAM 20 Km - CPTEC

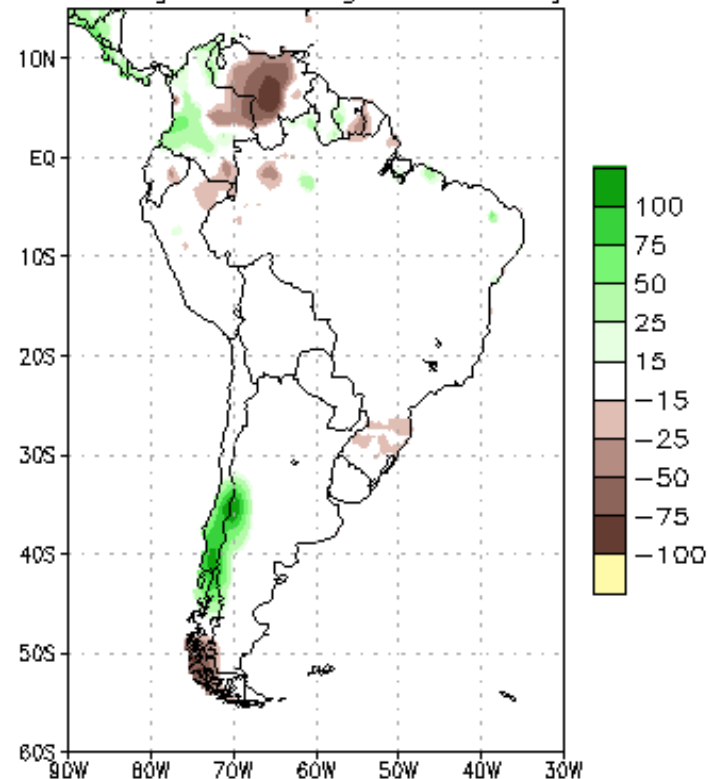


NCEP GFS Ensemble Forecast 1–7 Day Precipitation (mm)
from: 16Aug2021
16Aug2021–22Aug2021 Accumulation



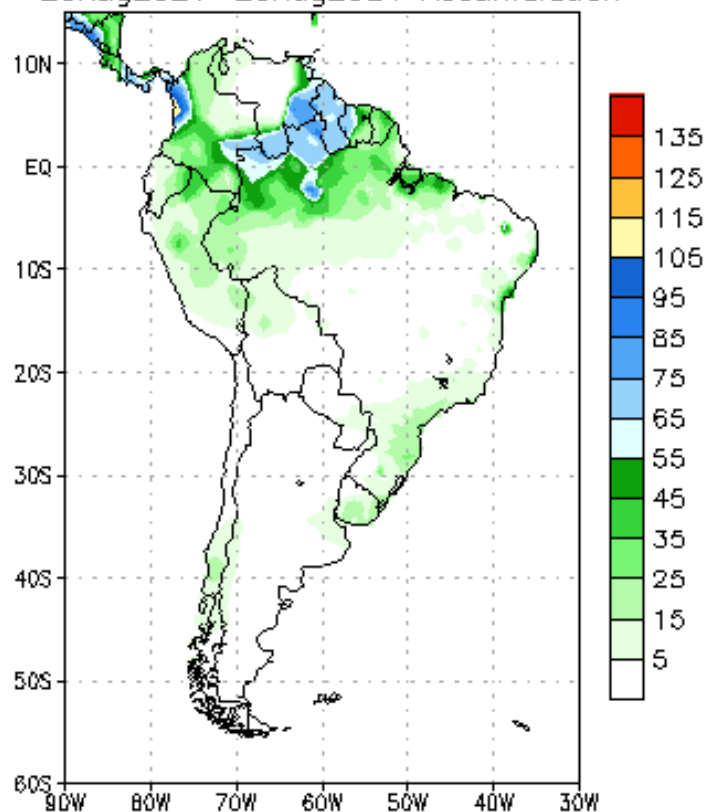
Bias correction based on last 30-day forecast error

NCEP GFS Ensemble Forecast 1–7 Day Precipitation (mm)
from: 16Aug2021
16Aug2021–22Aug2021 Anomaly



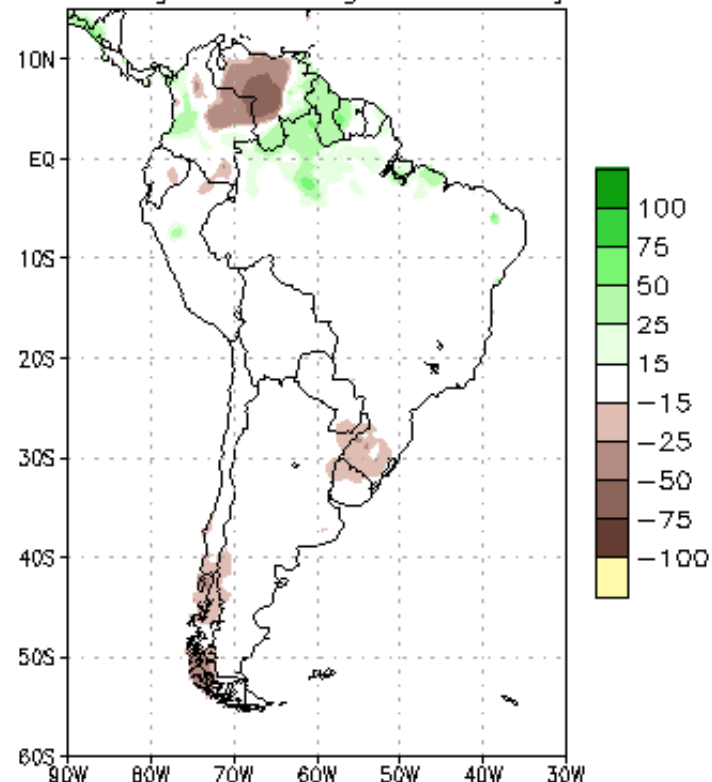
Bias correction based on last 30-day forecast error
CPC Unified Precip Climatology (1991–2020)

NCEP GFS Ensemble Forecast 8–14 Day Precipitation (mm)
from: 16Aug2021
23Aug2021–29Aug2021 Accumulation



Bias correction based on last 30-day forecast error

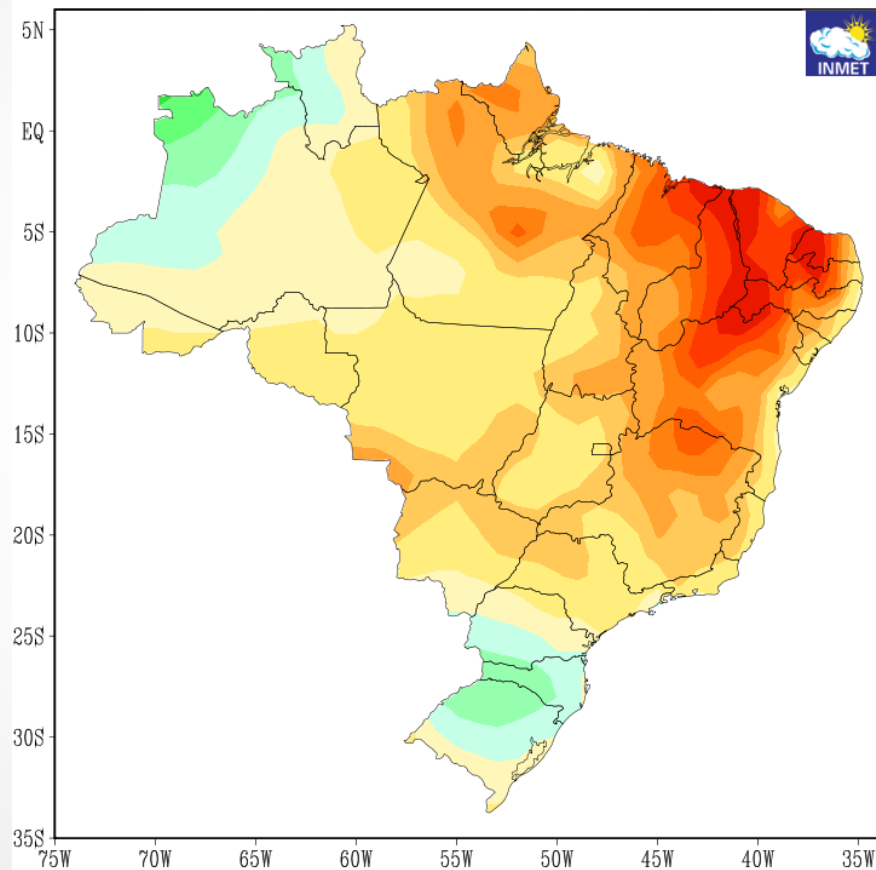
NCEP GFS Ensemble Forecast 8–14 Day Precipitation (mm)
from: 16Aug2021
23Aug2021–29Aug2021 Anomaly



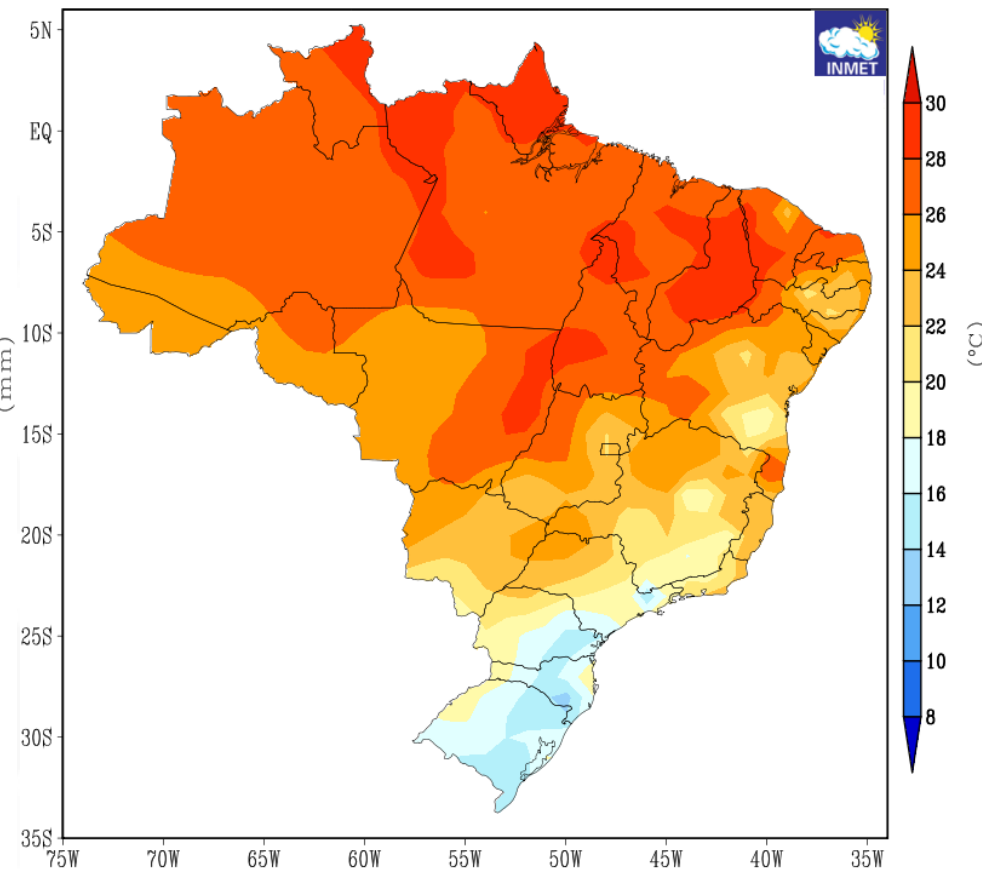
Bias correction based on past 30-day forecast error
CPC Unified Precip Climatology (1991–2020)

Previsão climática sazonal ASO/2021 para o conjunto CPTEC / INMET / FUNCEME

**NORMAL CLIMATOLÓGICA DA PRECIPITAÇÃO
TRIMESTRE AGOSTO-SETEMBRO-OUTUBRO
PERÍODO DE REFERÊNCIA : 1981-2010**

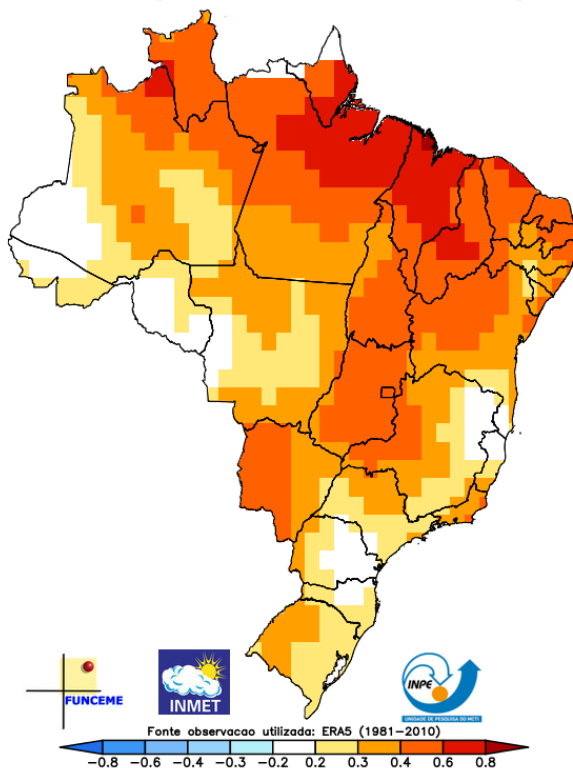


**NORMAL CLIMATOLÓGICA DA TEMPERATURA MÉDIA
TRIMESTRE AGOSTO-SETEMBRO-OUTUBRO
PERÍODO DE REFERÊNCIA : 1981-2010**

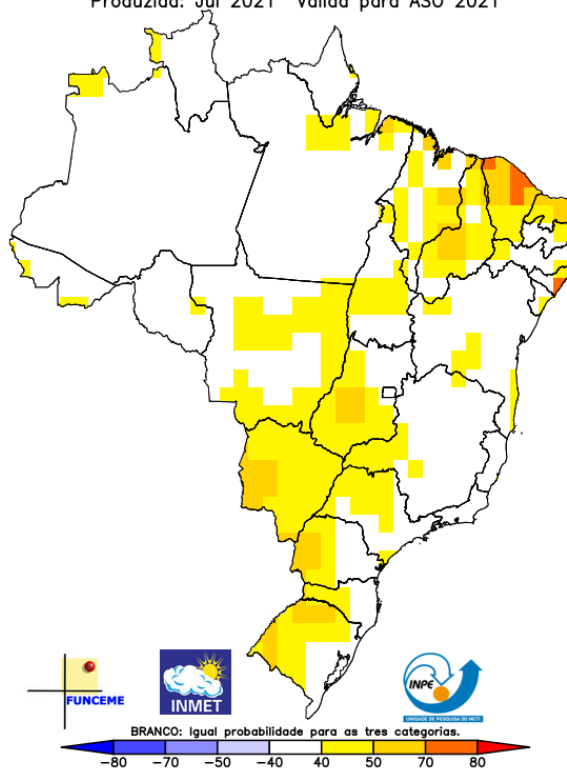


Previsão de anomalias de temperatura do ar ASO/2021

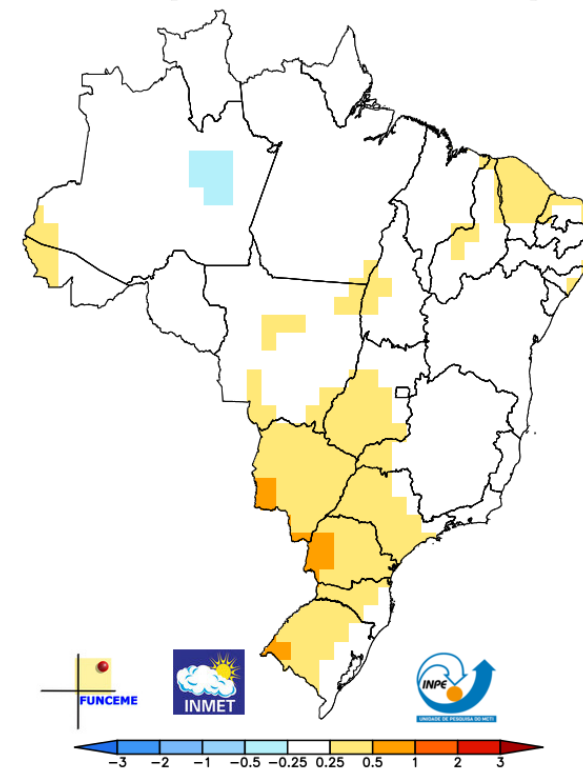
Correlação de Anomalia de Temperatura ASO
media [CPTec1.2+INMET+FUNCEME]



Multi-modelo CPTec/INMET/FUNCEME
Probab. tercil mais provavel: Temp. 2m (%)
Produzida: Jul 2021 Valida para ASO 2021

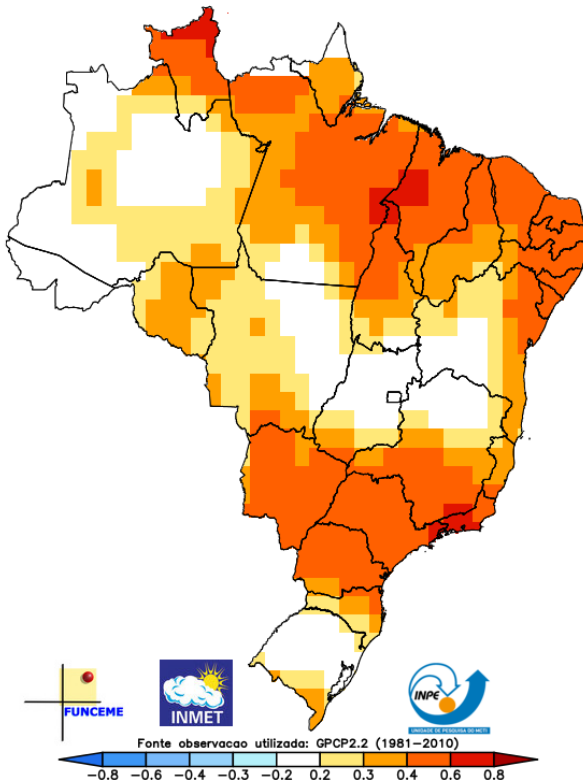


Previsão de Anomalia de Temperatura ASO/2021
media [CPTec1.2+INMET+FUNCEME]

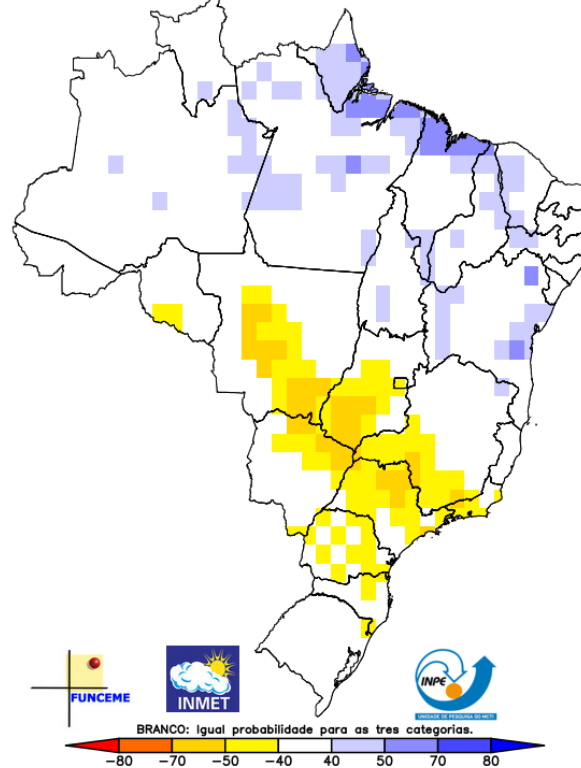


Previsão de anomalias de precipitação ASO/2021

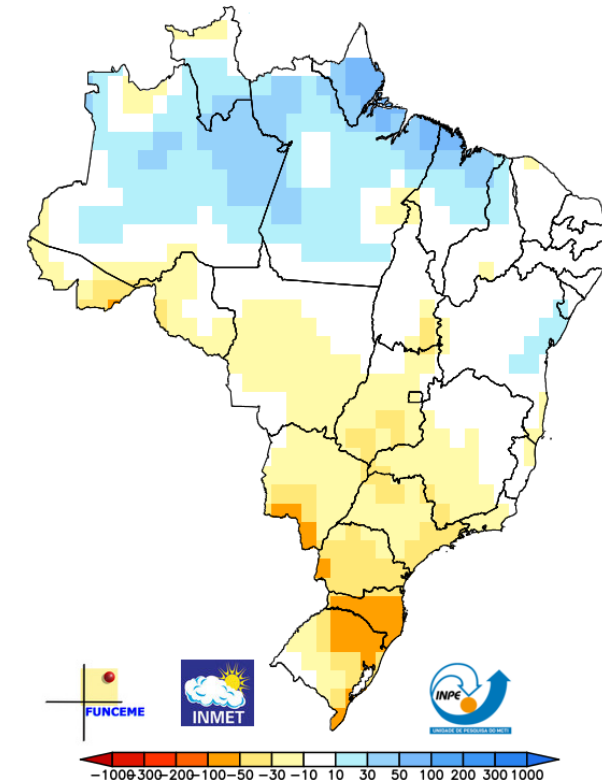
Correlação de Anomalia de Precipitação ASO
média [CPTC1.2+INMET+FUNCEME]



Multi-modelo CPTC/INMET/FUNCEME
Probab. tercil mais provável: Precip. (%)
Produzida: Jul 2021 Válida para ASO 2021

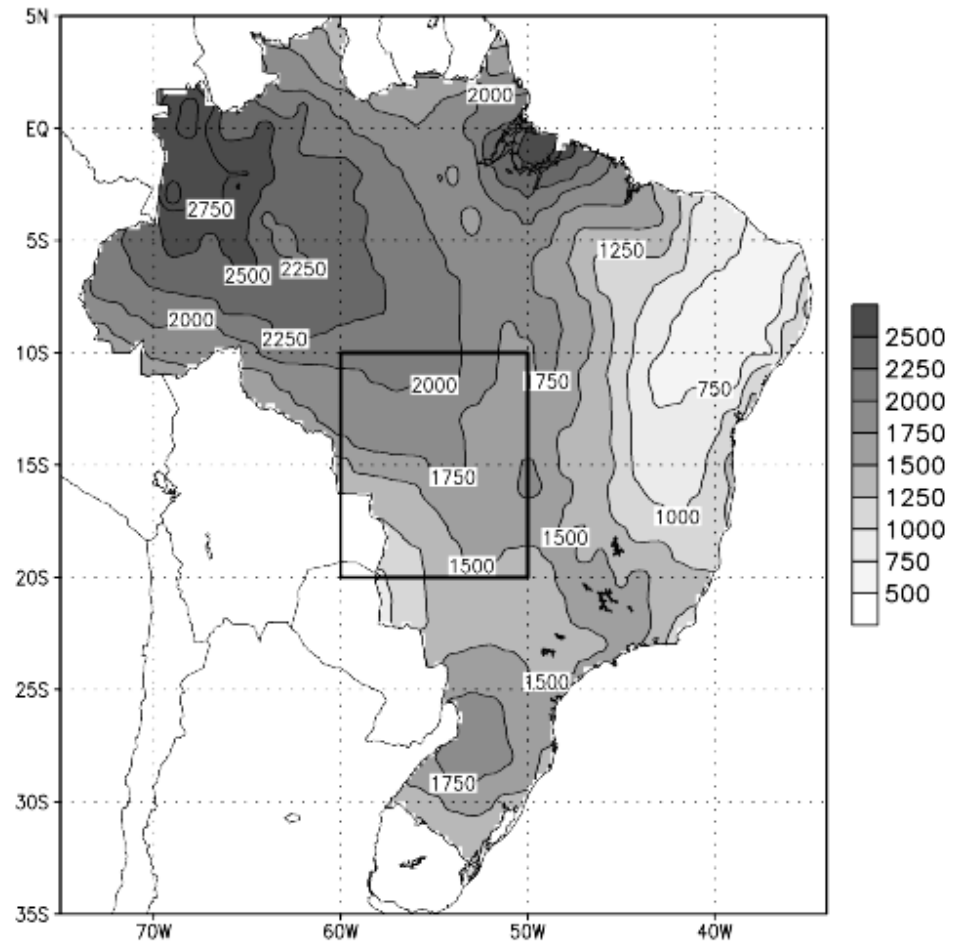


Previsão de Anomalia de Precipitação ASO/2021
média [CPTC1.2+INMET+FUNCEME]

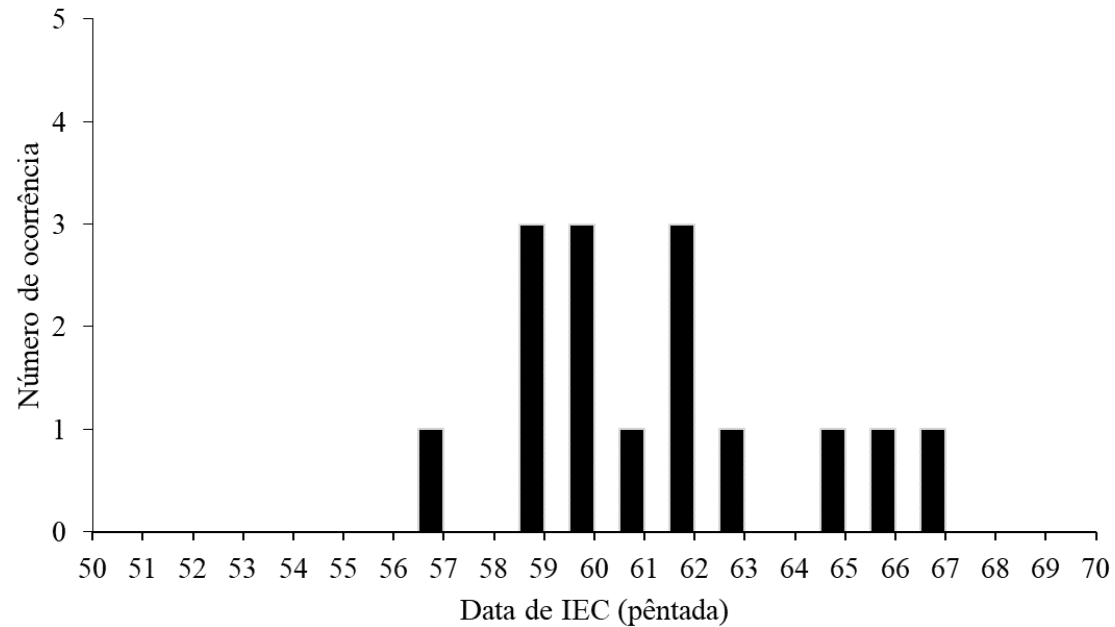


Índice do Início da Estação Chuvosa no Centro-Oeste do Brasil

Annual Precip. (mm) (1979–1995)

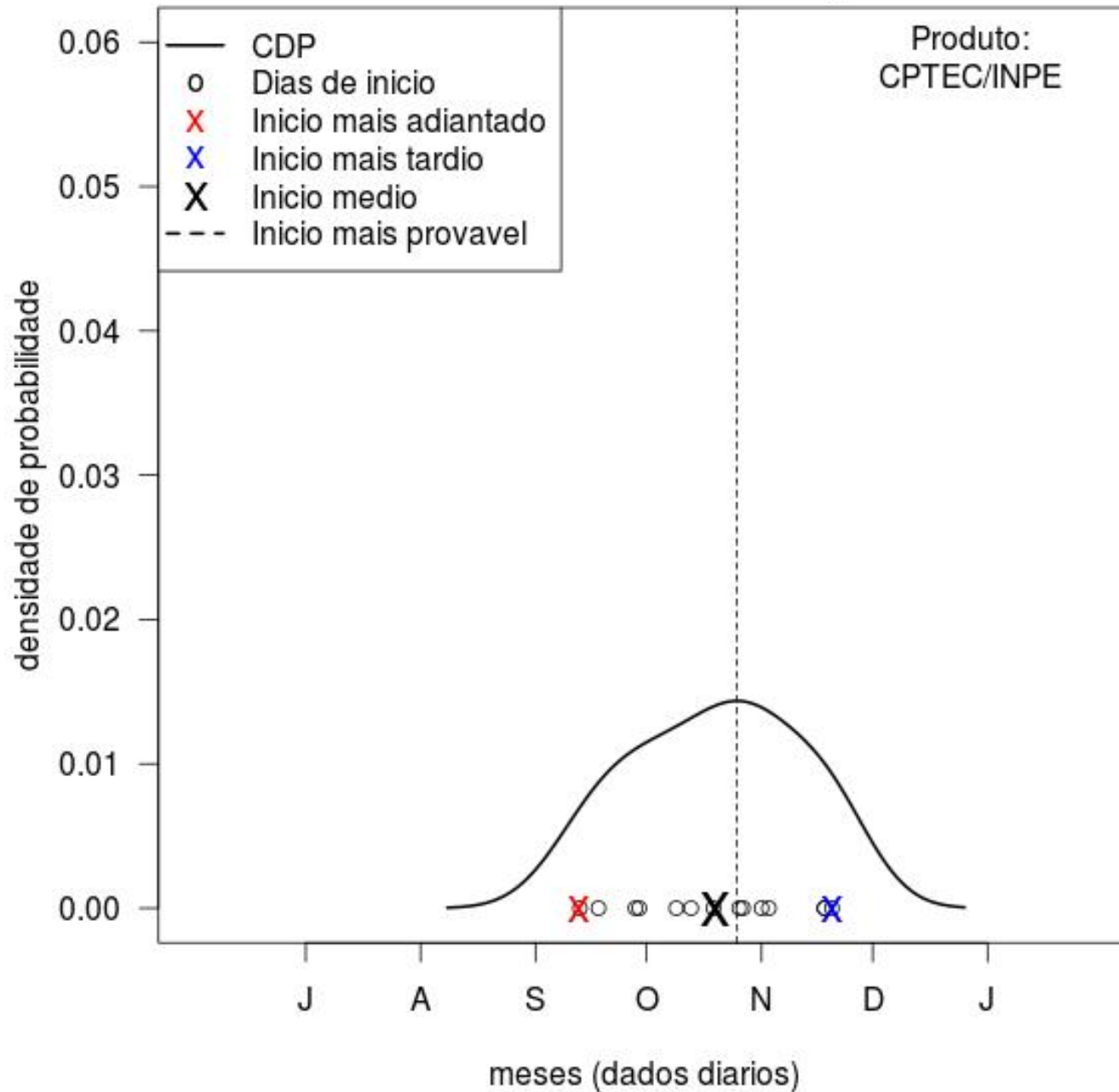


Previsão JUL/2021



Média: 28 de Outubro – 01 de Novembro (61)



Curva densidade probabilidade (CDP): Inicio da estacao chuvosa / Regiao 114



Obrigada!



WWW.MCTIC.GOV.BR

 mctic  mctic  @mctic  @mctic  sintonizemctic